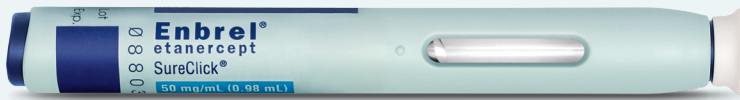


ENBREL® SureClick® Autoinjector

Injecting ENBREL with the push of a button



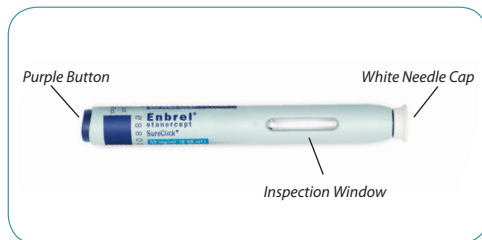
SureClick: The prefilled 50 mg, single-use autoinjector helps you to inject confidently with the push of a button.*

- Needle is invisible throughout the injection.
- Inspection window confirms the dose has been delivered.

Instructions for preparing and using the ENBREL SureClick Autoinjector

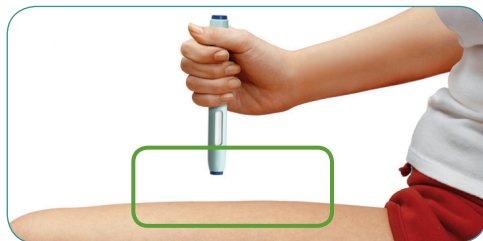
Note: These are only the key steps for using the SureClick Autoinjector. For detailed instructions on how to use the autoinjector, please refer to the full Consumer Information in the package insert.

Setting up for an injection

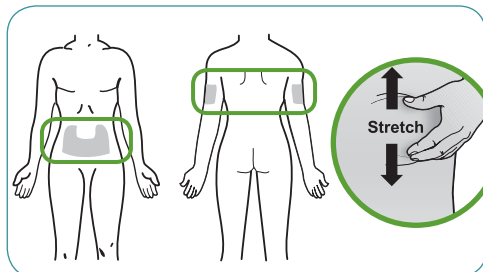


- Assemble the additional supplies you will need for your injection; alcohol swabs, a cotton ball or gauze and a puncture-resistant disposal container.
- Remove an ENBREL SureClick Autoinjector from the fridge. **DO NOT** shake the autoinjector.
- Make sure the solution in the inspection window is clear and colourless; if it is not, **DO NOT** inject. If the autoinjector or syringe appears cracked or broken, **DO NOT** inject.
- Check the expiration date on the autoinjector; **DO NOT** use if it has expired or if it has been stored at room temperature beyond 60 days (whichever comes first).
- For a more comfortable injection, allow the ENBREL autoinjector to reach room temperature (approximately 15 to 30 minutes). **DO NOT** remove the white needle cap during this time.
- Wash your hands thoroughly with soap and warm water.

Choosing and preparing an injection site



- The preferred injection site is the front of the thigh.

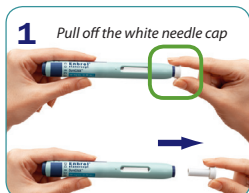


- As an alternate site, you can use the abdomen, except for the two-inch area right around the navel. If someone else is giving you the injection, they can also use the outer area of your upper arms. Stretch the skin on the alternate injection site to create a firm and taut surface.
- Choose a different site each time you give yourself an injection.
- **DO NOT** inject into areas where the skin is tender, bruised, red or hard. Avoid areas with scars or stretch marks.
- Wipe the injection site with an alcohol swab. **DO NOT** touch this area again before giving the injection.

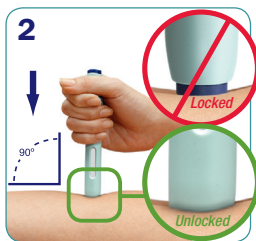
* Compared to other ENBREL formats.

See reverse side for injection instructions.

Injecting ENBREL

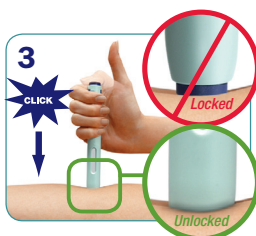


Pull the white needle cap straight off. **DO NOT** twist. **DO NOT** re-attach the needle cap onto the autoinjector.

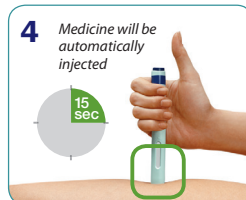


DO NOT touch the purple button. Press the autoinjector onto your skin to unlock the safety guard.

- **DO NOT** press the purple button until the safety guard is fully retracted.
- **DO** keep enough downward pressure to fully retract the purple safety guard and to keep the purple button unlocked.
- **DO** hold the autoinjector at a right angle (90°) at the injection site.



Briefly press and release the purple button.



Count slowly to 15 seconds for the injection to end.

- **DO** maintain pressure on the skin during the injection.
- **DO NOT** move the prefilled autoinjector during the injection.
- **DO** wait for the injection to finish before releasing pressure.
- You might hear a second click as the purple button pops back up.



After the injection, check the inspection window to confirm that the full dose has been delivered. The inspection window will have turned purple. If the inspection window is not purple, please call 1.877.9ENBREL for assistance.

Disposing of supplies

- The ENBREL SureClick Autoinjector should **NEVER** be reused. **NEVER** recap the needle.
- Dispose of the used autoinjector in a puncture-resistant container. **DO NOT** throw the used autoinjector into the household trash nor recycle. **ALWAYS** keep the container out of the reach of children.

How to store ENBREL

- ENBREL SureClick Autoinjector should be refrigerated at 2° to 8°C. **DO NOT** freeze. Refrigerated ENBREL remains stable until the expiration date printed on the autoinjector. ENBREL may be transferred to room temperature storage (up to 27°C). Upon removal from the refrigerator, it must be used within 60 days. Protect from direct sunlight, sources of heat and humidity until ready to use.

Questions? Call Enliven®. Enliven is available to help you get started on ENBREL, assist you in determining your insurance coverage options and answer any questions you may have. Just call Enliven toll-free 24 hours a day, 7 days a week, at 1.877.9ENBREL (1.877.936.2735) or visit www.enbrel.ca.

Important Product Information

ENBREL is a medicine for treating people with moderate to severe forms of rheumatoid arthritis, juvenile idiopathic arthritis and a type of disease called psoriatic arthritis. ENBREL is also for treating adults with a type of arthritis called ankylosing spondylitis and for adults with moderate to severe psoriasis.

All medicines have side effects. Medicines, like ENBREL, that affect your immune system can cause serious side effects.

The possible serious side effects include serious infections and malignancies. There have been cases where patients taking ENBREL or other TNF blocking agents have developed serious infections, including tuberculosis (TB) and infections caused by bacteria, viruses or fungi that have spread throughout their body. Some patients have died from these infections. In very rare cases, hepatitis B recurred in patients with previous hepatitis. If you tend to get infections easily or if you develop an infection while taking ENBREL, you should tell your doctor right away. There have been cases, sometimes fatal, of unusual cancers in children and teenage patients who started using TNF blocking agents, including ENBREL, at less than 18 years of age.

In studies comparing ENBREL to placebo (inactive injection), side effects that occurred more frequently in patients treated with ENBREL were:

- reactions where the injection was given. These reactions are usually mild and included redness, swelling, itching or bruising. These usually go away within 3 to 5 days. If you have pain, redness or swelling around the injection site that doesn't go away or gets worse, call your doctor.
- upper respiratory infections (sinus infections).
- headaches.

Before you start taking ENBREL, you should tell your doctor if any of the following apply to you:

- Have an infection, which could put you at risk for serious side effects from ENBREL.
- Have symptoms of an infection such as fever, sweats or chills, cough or flu-like symptoms, shortness of breath, blood in your phlegm, weight loss, muscle aches, warm, red, or painful areas on your skin, sores on your body, diarrhea or stomach pain, burning when you urinate or urinate more often than normal, and feel very tired.
- Have a history of infections that keep coming back or other conditions, like diabetes, that might increase your risk of infections.

- Have tuberculosis (TB), or if you have been in close contact with someone who has or has had TB. You will need to be evaluated for TB. Your doctor should test you for TB before starting ENBREL.
- Born in, lived in or travelled to countries where there is a risk for getting TB. Ask your doctor if you are not sure.
- Live in, have lived in or have travelled to areas where there is a greater risk of certain kinds of fungal infections (histoplasmosis, coccidioidomycosis, blastomycosis). These infections may develop or become more severe if you take ENBREL. If you don't know if you have lived in an area where these infections are common, ask your doctor.
- Have persistent numbness, tingling and muscle weakness or a disease such as multiple sclerosis, Guillain-Barré or a Guillain-Barré-like syndrome, which causes inflammation of the nervous system, either in the brain and spinal cord or nerves going to your hands and feet.
- Been newly diagnosed or are being treated for congestive heart failure.
- Been scheduled to have major surgery.
- Been scheduled to be vaccinated for anything. All vaccines should be brought up to date before starting ENBREL. Patients taking ENBREL should not receive live vaccines.
- Used the medication Kineret® (anakinra), Orencia® (abatacept) or cyclophosphamide.
- Have been around someone with varicella zoster (chicken pox, shingles).

Know the medicines you take. Keep a list of them to show your doctor and pharmacist each time you get a new medicine.

Your doctor should monitor you closely for signs and symptoms of TB during treatment with ENBREL even if you have tested negative for TB. If you develop any of the symptoms of TB (a dry cough that doesn't go away, weight loss, fever, night sweats), call your doctor.

For complete information, please refer to the ENBREL Consumer Information section of the ENBREL Product Monograph or package insert.

Kineret® and Orencia® are registered trademarks of their owners.

ENBREL® and Enliven® are registered trademarks of Immunex Corporation, and SureClick® is a registered trademark of Amgen Inc., all used with permission.

© 2011 Pfizer Canada Inc. and Amgen Canada. All rights reserved.

Reference: ENBREL (etanercept) Product Monograph, Amgen Canada Inc. and Pfizer Canada Inc. October 26, 2010.



Pfizer Canada Inc.
Kirkland, Quebec



AMGEN Canada Inc.
Mississauga, Canada



YOUR ENBREL SUPPORT PROGRAM

